

# SCHMERSAL Tech Briefs:

## Universal BDF200 Control Station



### Operator Options



NH E-Stop Operator for position 1



NHK Collared E-Stop Operator for position 1



SWS20 Keyed Selector Switch with maintained actuation for position 2

### Overview

The BDF series control stations are designed to offer up to 4 operators for various machine or process controls conveniently located at the guard door in one compact, easy to install housing. The BDF series eliminates the need for larger custom control boxes to be designed and manufactured for guard door controls.

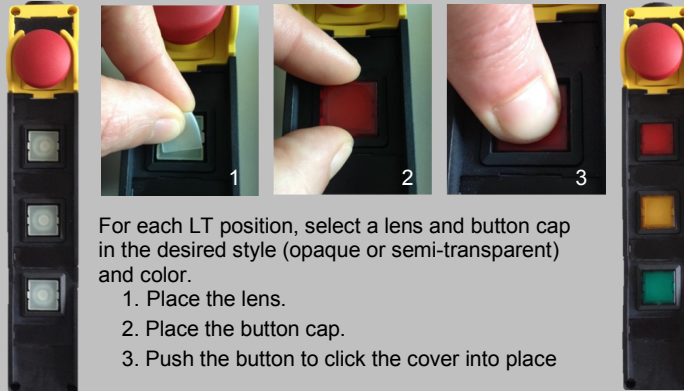
The Universal Kit model (-2875) has several positions, designated LT in the part number, which can be converted in the field to either a pushbutton, an illuminated push button, or an indicator light. This conversion is based on the wiring of the contacts and/or LED for each position, and the application of appropriate colored button caps provided. The accessories package includes 7 opaque button caps in various colors, 5 semi-transparent button caps in various colors, and 4 lens inserts.

Three types of base models are available:

- all four operator positions customizable;
- either a NH or NHK E-Stop button installed in position 1, with the remaining three operator positions customizable;
- either a NH or NHK E-Stop buttons installed in position 1, a SWS20 keyed selector switch installed in position 2, and the remaining two operator positions customizable.

These models are offered with 1 NO & 1 NC contacts (-11), 2 NO contacts (-20), or with 1 NO contact and LED indicator lamp (-10...-G24).

### Field customization



For each LT position, select a lens and button cap in the desired style (opaque or semi-transparent) and color.

1. Place the lens.
2. Place the button cap.
3. Push the button to click the cover into place

The LT positions can be converted into one of three options:

- For a pushbutton, use an opaque cap and connect only the contacts for that position.
- For a illuminated pushbutton, use a semi-transparent cap and connect the contacts and the LED.
- For a indicator light, use a semi-transparent cap and only connect the LED.

### Features



BDF200 fits standard housing extrusions and aesthetically matches our AZM201.

### Applications

- Material handling systems
- Packaging machinery
- Chemical processing equipment
- Robot cells
- Folding or brake presses
- Filter presses
- Punching machines
- Printing machines
- Injection molding
- Palletizers
- Packaging equipment

### Available Literature



GK-1 Products Catalog page 2-18

### Ordering Details

Items in bold are regularly stocked

#### All customizable positions

**BDF200-LT-11-LT-LT-LT-2875**  
**BDF200-LT-20-LT-LT-LT-2875**

#### With E-Stop

**BDF200-NH-11-LT-LT-LT-2875**  
BDF200-NHK-11-LT-LT-LT-2875  
**BDF200-NH-20-LT-LT-LT-2875**  
BDF200-NHK-20-LT-LT-LT-2875  
**BDF200-NH-10-LT-LT-LT-G24-2875**  
BDF200-NHK-10-LT-LT-LT-G24-2875

#### With E-Stop & Keyed selector switch

**BDF200-NH-11-SWS20-LT-LT-2875**  
BDF200-NHK-11-SWS20-LT-LT-2875  
BDF200-NH-20-SWS20-LT-LT-2875  
BDF200-NHK-20-SWS20-LT-LT-2875

#### Accessories

**BDF-U200-PBC** (spare pushbutton covers)

Includes:

- 7 opaque button covers  
Yellow, Red, Green, Blue, White, Grey, and Black
- 5 Semi-transparent button covers  
Yellow, Red, Green, Blue, and White
- 4 lens inserts

**MP BDF 200** (Mounting plate for use with AZM200)

### Part number breakdown

**BDF200-①-②-③-LT-LT-④-2875-⑤**

- ① Operator Position 1  
NH E-Stop button on yellow  
NHK Collared E-Stop on yellow  
LT Customizable button
- ② Contacts  
11 1 NO & 1 NC  
20 2 NO  
10 1 NO
- ③ Operator Position 2  
STS20 Keyed Selector Switch  
LT Customizable button
- ④ LED indicator lamp  
Blank without  
G24 for 10 contacts only
- ⑤ Connection  
Blank Cord Grip & screw terminals  
2920 prewired quick connect

### Contact

#### Schmersal USA

15 Skyline Drive  
Hawthorne, NY 10532  
Tel: 914-347-4775  
Fax: 914-347-1567  
E-mail: [salesusa@schmersal.com](mailto:salesusa@schmersal.com)

#### Schmersal Canada

29 Centennial Road, Unit 1  
Orangeville ON L9W 1R1  
Tel: 519-307-7540  
Fax: 519-307-7543  
E-Mail: [salescanada@schmersal.com](mailto:salescanada@schmersal.com)