



# 2N Sentrio

**A guardian in elevator emergencies. For all!**

Get peace of mind with 2N Sentrio, an advanced IP-based emergency communicator with a 7" display, designed for top-tier safety and inclusivity. It ensures that everyone can access prompt assistance during elevator emergencies and fully complies with ASME A17.1-2022.

Passengers can make audio calls via VoIP or use text communication, ideal for the hearing-impaired. It's enhanced by live two-way video streaming that allows real-time visuals between the cabin and the call centre agent.

## Features and benefits

### Inclusive communication

2N Sentrio caters to diverse user needs by supporting both VoIP audio calls and text communication, making it accessible for hearing-impaired passengers.

### Enhance safety with live video

Provide operators with real-time visuals during an emergency. 2N Sentrio activates live video streaming from an external IP camera when something happens - but protects privacy by making the video stream unavailable day-to-day.

### Compliant with safety codes

Fully compliant with ASME A17.1-2022, 2N Sentrio meets the highest safety regulations and provides passengers with reliable emergency communication. It also meets IEC 62443-4-1 and 62443-4-2 cybersecurity standards when used with 2N LiftGate.

### Intuitive alarm call handling

The 2N Elevator Center allows operators to manage alarm calls with full control via an intuitive interface that features live video streaming, real-time chat, and access to chat history supplemented by video recordings.

### Multilingual, customizable chat

2N Elevator Center offers predefined questions in multiple languages for text communication with the hearing-impaired. They can select their preferred language at the start of the interaction, ensuring clear communication with the operator.

### Scalable solutions for every building

The Cabin unit is available with or without buttons and can be enhanced with top and bottom shaft audio units. For high-rise buildings, add a Lobby unit to ensure on-site communication with trapped passengers.

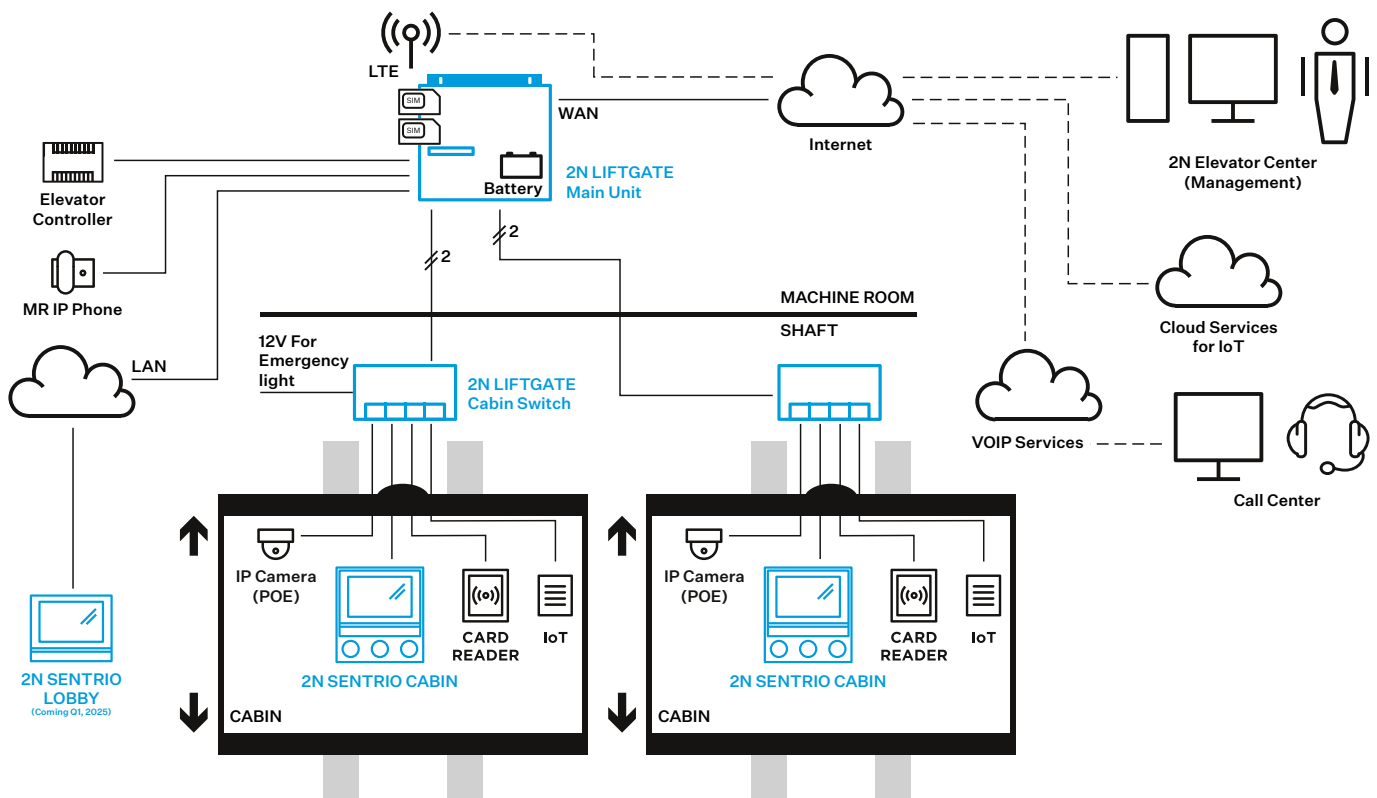
### Instant control via the cloud

Allow operators to start remote configuration and monitoring instantly by connecting the emergency communicator to the 2N Elevator Center cloud. It automatically configures from a pre-loaded template!

### Effortless connectivity via IoT gateway

Use the 2N Sentrio with 2N LiftGate and Cabin Switch to deliver backed-up PoE power, external communication with the call centre, and broadband connectivity to the cabin – all with only two wires in the travelling cable.

## Connection diagram

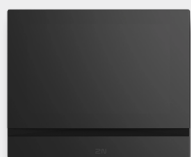


## Variants & Accessories



**2N  
Sentrio  
Cabin**

91378901US



**2N  
Sentrio  
Lobby**

91378903  
(coming soon)



**2N  
Sentrio  
Switch**

91378904



**2N  
Sentrio  
Frame**

3 buttons  
913789051



**2N  
Sentrio  
Frame**

no buttons  
91378993



**Flush  
mount  
box**

(for Lobby unit)  
91378800



**Desk  
stand**  
(for Lobby unit)

91378802



**2N IP  
Phone  
D7A**

2N IP Phone D7A  
1120102

USB camera  
1120105



**2N  
LiftGate**

Main Unit  
5024101US

Cabin Switch  
502460E

## Assembly



## Technical parameters

### Power Supply

|                              |                               |
|------------------------------|-------------------------------|
| Type:                        | 12V DC adapter or PoE 802.3af |
| Recommended power supply:    | 12V/1A                        |
| Reverse polarity protection: | yes                           |

### User Interface

|               |                        |
|---------------|------------------------|
| Controls:     | capacitive touch panel |
| Display size: | 7"                     |
| Resolution:   | 1024x600px             |

### Audio

|                        |                                    |
|------------------------|------------------------------------|
| Microphone:            | integrated or external             |
| Speaker:               | integrated (2W), or external       |
| Induction loop output: | 600mV RMS                          |
| Codecs:                | G.711a/u, G.722, G.729, L16/16 kHz |

### Video

|         |   |
|---------|---|
| Codecs: | H.264 (Main or Baseline profile), MJPEG |
|---------|---|

### 2N Sentrio Cabin Interface

|                      |                    |
|----------------------|--------------------|
| LAN:                 | 10/100BaseT, RJ-45 |
| Recommended cabling: | Cat5e or higher    |
| Contact Inputs:      | Alarm 1            |
| Contact Outputs:     | Induction Loop     |

### 2N Sentrio Switch Interface

|                     |   |
|---------------------|---|
| Contact Inputs      | 4x (Yes, No, Alarm 2, Cancel)                 |
| Relay Outputs       | 2x NO/NC (1x blocking, 1x user- programmable) |
| Voice Alarm Station | 2x (top and bottom shaft audio units)         |
| External Microphone | 1x  |
| External Speaker    | 1x  |

### Mechanical Parameters

|                                       |                            |
|---------------------------------------|----------------------------|
| Operating temperature:                | -4° to 122°F               |
| Storage temperature:                  | -4° to 158°F               |
| Relative operating humidity:          | 10 to 90% (non-condensing) |
| Recommended altitude:                 | 0 to 6,500 ft              |
| Weight (with frame and buttons):      | 2.09 lb                    |
| Weight (with frame, without buttons): | 1.83 lb                    |
| Weight (2N Sentrio Switch)            | 0.35 lb                    |

### Dimensions

|  |                                     |
|--|-------------------------------------|
| 2N Sentrio (with frame and buttons)      | 7.992(W) x 8.898(H) x 2.480(D) inch |
| 2N Sentrio (with frame, without buttons) | 7.835(W) x 6.378(H) x 2.480(D) inch |
| 2N Sentrio Switch                        | 3.228(W) x 3.228(H) x 1.181(D) inch |

### Warranty

5-years warranty see  
[https://www.2n.com/en\\_GB/support/warranty-and-repairs](https://www.2n.com/en_GB/support/warranty-and-repairs)