

TECH BRIEF: BDF40 CONTROL PANEL



**Integrated
BDF40 / AZM40 / DHS
door system**



The BDF series control stations are designed to offer up to 4 operators for various machine or process controls conveniently located at the guard door in one compact, easy to install housing. The BDF series eliminates the need for larger custom control boxes to be designed and manufactured for guard door controls.

The BDF40 housing is a slim line design, matching our AZM40 solenoid interlock. It is designed to be mounted to standard guarding profile systems (40mm / 1.5 inch profile). The thermoplastic housing is IP65 rated to withstand normal dusty and humid industrial environments.

Two base models are available:
BDF40-ST-10-NH-LT-LT-LT: an E-Stop button installed in position 1 (NH), with the remaining three operator positions customizable (LT);
BDF40-ST-10-LT-LT-LT-LT: all four operator positions customizable (LT);

The LT positions on the control panel can be field customized to pushbuttons or illuminated pushbuttons in various colors, by the application of button caps in 11 colors. The operators can be mapped to a wide range of functions, such as emergency stop, start, stop, unlock/lock, reset, or signal lights to display machine status or system faults. Five labeling spaces on the housing allow for equipment and function identification.

The NH E-stop is red mushroom button, latching with a twist reset, and a yellow base. No additional labeling is needed to meet E-stop standards, but a yellow protective collar is available to prevent accidental tripping.

This control panel can be installed quickly and as error-free as possible via a plug-and-play M12, 12 pin connector. With optional covers for masking the plug connection, the BDF40 control panel not only provides manipulation protection for the connection cable, it offers a clean design for the control unit.

The BDF40 offers simple contact configuration: 2 NC contacts for the NH E-Stop (position 1) and 1 NO contact for all LT positions.

The BDF40 control panel can be integrated with the AZM40 solenoid interlock and DHS door handle into a slim, modern door system, by adding a few accessories and connecting parts.

ORDERING DETAILS

BDF40-ST-10-NH-LT-LT-LT
with E-stop, 3 customizable buttons/indicator lights

BDF40-ST-10-LT-LT-LT-LT
with 4 customizable buttons/indicator lights

ACCESSORIES

Pushbutton cap sets
BDF40-DHS-PBC-LT Illuminated (5 colors)
BDF40-DHS-PBC-DT Opaque (6 colors)

Pushbutton caps (set of 5)
BDF40-DHS-PBC-DT-BK BLACK
BDF40-DHS-PBC-DT-BU BLUE
BDF40-DHS-PBC-DT-GN GREEN
BDF40-DHS-PBC-DT-RD RED
BDF40-DHS-PBC-DT-WH WHITE
BDF40-DHS-PBC-DT-YE YELLOW

Illuminated pb/ light caps (set of 5)
BDF40-DHS-PBC-LT-BU BLUE
BDF40-DHS-PBC-LT-GN GREEN
BDF40-DHS-PBC-LT-RD RED
BDF40-DHS-PBC-LT-WH WHITE
BDF40-DHS-PBC-LT-YE YELLOW

Protective collar for emergency stop
MS-BDF40-NHK

Cable cover
MS-BDF40

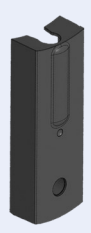
AZM40/BDF40 connecting cover set
MS-AZM40-BDF40-L left
MS-AZM40-BDF40-R right

Cables: M12, 12 Pole
103055641 5 meter
103016593 10 meter
103055642 15 meter

ACCESSORIES



■ AZM40/BDF40 connecting cover set



■ MS-BDF40 cable cover



■ MS-BDF40-NHK protective collar for E-Stop

■ Illuminated pushbutton caps (transparent)



■ Pushbutton caps (opaque)

