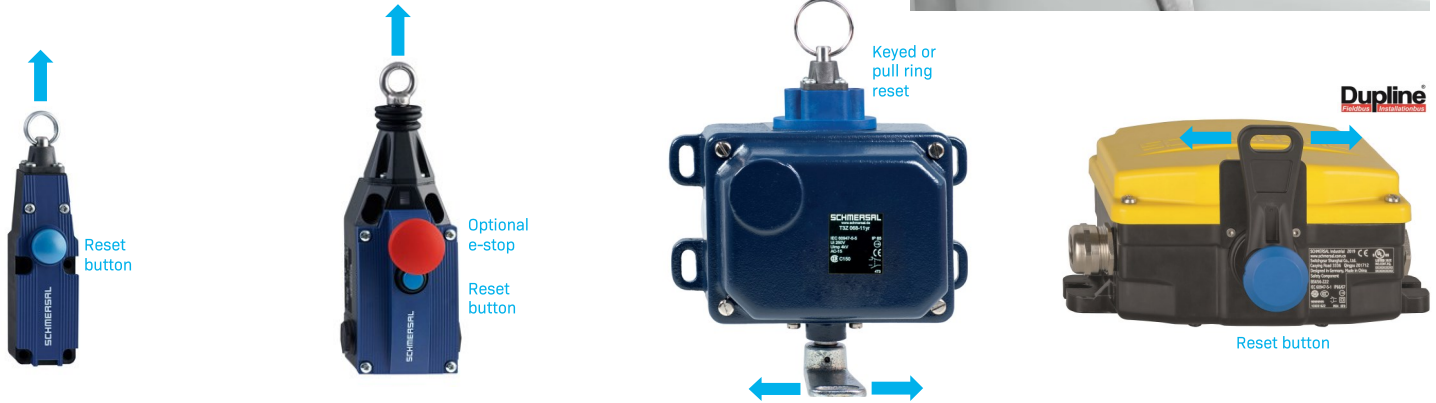


# TECH BRIEF:

## EMERGENCY CABLE PULL SWITCHES

Emergency Cable Pull Switches are designed to provide continuous emergency stop control along exposed areas of machinery and conveyors which present hazards to operator/maintenance personnel. As such, they can fulfill the requirements of having a means of an emergency shutdown at every area where a work related task is being preformed. Unlike isolated E-Stop pushbuttons, emergency cable-pull systems can be actuated at any point along the "trip wire".

Schmersal emergency cable pull switches feature the required reset function, double-break contact blocks offering a choice of several contact variations, optional integrated E-Stop palm button and the required means of tension monitoring. Once the trip wire is tensioned, the switch will initiate an emergency shutdown if an operator falls into, is pulled into, or pulls on the trip wire and will also fail to safe if the cable is cut or goes slack.



### ZQ700

up to 10 M  
Reset button

#### Ordering Details

##### ZQ700-①

- ① Contacts:  
11 1 NO & 1 NC  
02 2 NC

### ZQ900

up to 75 M  
Reset button  
Optional E-Stop

#### Ordering Details

##### ZQ900-①-②

- ① Contacts:  
11 1 NO & 1 NC  
13 1 NO & 3 NC  
22 2 NO & 2 NC  
02 2 NC  
04 4 NC
- ② Emergency Stop pushbutton:  
Blank without E-Stop button  
N with E-Stop button

### T3Z 068

Bi-directional,  
up to 50 M both directions  
Keyed or pull ring reset

#### Ordering Details

##### T3Z068-①YR②③

- ① Contacts:  
11 1 NO & 1 NC  
22 2 NO & 2 NC  
33 3 NO & 3 NC
- ② Reset Type:  
Blank Pull ring reset  
S Key reset
- ③ Indicator Lamp:  
Blank without indicator lamp  
G with indicator lamp

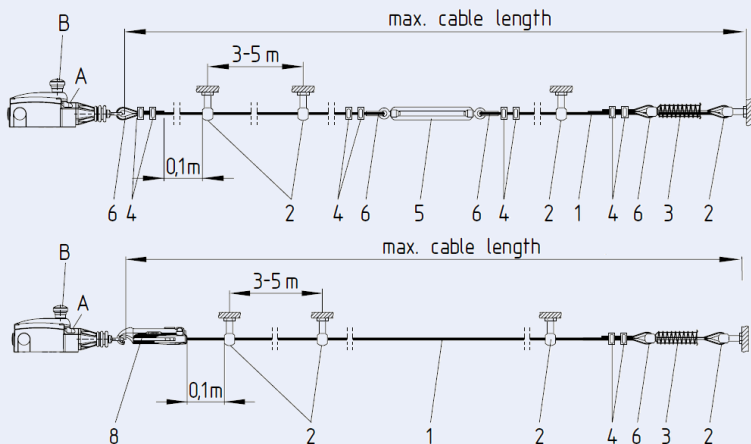
### RS65x

Bi-directional,  
up to 100 M both directions  
Reset button

#### Ordering Details

##### RS65①-Z22-②-③

- ① Housing material  
5 Cast iron, painted  
6 Thermosetting resin
- ② Indicator lamp (Red)  
Blank without lamp  
G024 lamp, 24 VDC  
G115 lamp, 115 VAC  
G230 lamp, 230 VAC
- ③ Integrated Dupline input module  
Blank without Dupline  
DS with Dupline



### Cable and Installation Accessories

- (1) Wire rope (red)  
**STQ441-SC**
  - (2) Eyebolt  
**STQ441-EB**
  - (3) Spring  
**RZ-1731**(ZQ700)  
**RZ-2041**(ZQ900)  
**RZ-163E**(T3Z 068)  
**ACC-RS65X-TS**(RS65x)
  - (4) Wire clamp  
**STQ441-CC**
  - (5) Tensioner  
**STQ441-TB**
  - (6) Wire thimble  
**STQ441-TH**
  - (7) Shackle  
**S900-SH**
  - (8) Rope tensioner  
**S900**
- Pulley  
**STQ441-PU**
- Signal lamp  
**PL-M20-24V**  
**PL-M20-120V**

Contact us for information on customizing a complete cable pull system - a preassembled kit which will include the cable pull switch, cable cut to length, and all the accessories needed for installation.

#### SCHMERSAL USA

15 Skyline Drive, Hawthorne, NY 10532  
Tel: 914-347-4775, Fax: 914-347-1567  
E-mail: salesusa@schmersal.com  
www.schmersalusa.com

#### SCHMERSAL CANADA

29 Centennial Road, Unit 1, Orangeville ON L9W 1R1  
Tel: 519-307-7540, Fax: 519-307-7543  
E-Mail: salescanada@schmersal.com  
www.schmersalcanada.ca